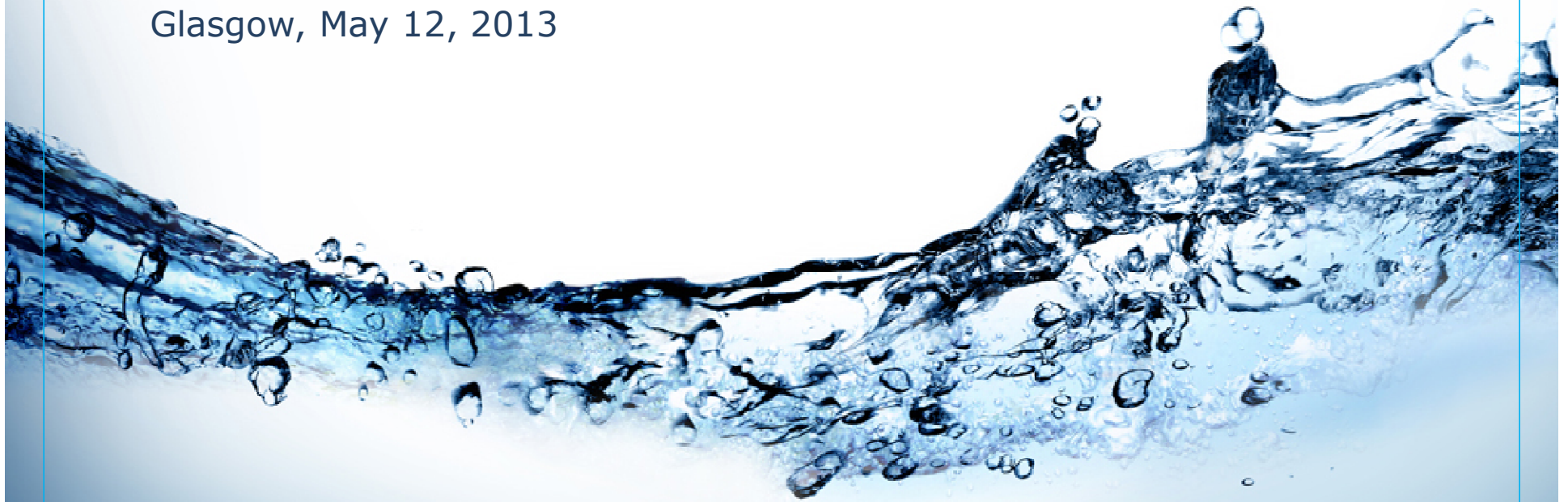




WULCA
A LIFE CYCLE
INITIATIVE PROJECT



Glasgow, May 12, 2013



**Assessment of use and depletion of water
resources within the LCA Framework –
PHASE 2**

PHASE 2



- Main goals:
- - Develop a **general assessment framework** for assessing water use including indicators that measure the environmental impacts on human health, ecosystems and freshwater resources;
- - Establish adequate water inventory schemes and parameters;
- - Establish impact assessment methods for characterizing water use and related environmental impacts;
- - Derive recommended practice and guidance for LCA method developers and practitioners.

Meetings



- **Kick-off meeting, 30 August, 2007; LCM 2007 Conference; Zurich, Switzerland.**
- **Annual Meeting, 25 May, 2008; SETAC Europe Annual Meeting; Warsaw, Poland.**
- **Annual Meeting, 31 May, 2009; SETAC Europe Annual Meeting; Göteborg, Sweden.**
- **Annual Meeting, 24 May, 2010; SETAC Europe Annual Meeting; Seville, Spain.**
- **Annual Meeting, 15 May, 2011; WULCA Working Group Meeting, SETAC Annual Meeting; Milano, Italy.**
- **Annual Meeting, 20 May, 2012; WULCA Annual Meeting, SETAC World; Berlin, Germany.**

Main Output



- Papers
 - Bayart J-B, Bulle C, Deschênes L, Margni M, Pfister S, Vince F, Koehler A (2010) A framework for assessing off-stream freshwater use in LCA. The International Journal of Life Cycle Assessment 15 (5):439-453
 - Kounina et al. (2012) Review of methods addressing freshwater use in life cycle inventory and impact assessment
- Input to ISO standard
- Input toecoinvent water LCI structure
- Training material on water footprint (for UNEP)